


FLOOD SENSOR VALVE


Smart water valve


Flood Sensor Valve is an effective protection of your home against water leaks. Available in three different sizes to fit your home water pipe system. You can charge the battery using a power bank or it can be plugged directly to your home's electrical network. Conveniently control the water supply via a mobile app, and protect your home against water leaks.




 Over the air - the device updates from the application level on the phone


 waterproof IP 67


 battery or permanent power supply, charging via USB port

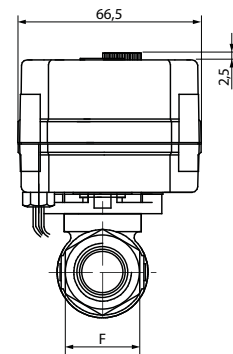
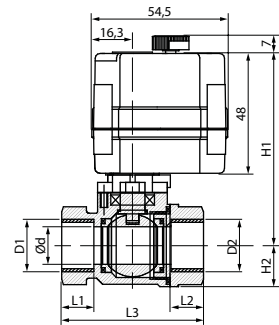
 available for threads DN15, DN20, DN25

 Auraton Anti-Stop protecting against stone deposits and seizing

 backup communication with the Flood Sensor

 modulation of the radio signal, allowing double the range of communication between the Flood Sensor and Flood Sensor Valve

 two-way communication



Torque	2 Nm
Opening / closing time	about 5s
Operating voltage	5 V
Power consumption	3 W
IP code	IP67
Maximum refrigerant pressure	1,0 MPa
Medium temperature range	0-100°C
Operating temperature range	-20°C – 45°C
Humidity	≤85% no condensation
Control signals	LED, sound signal
Power supply	Battery Li-ion / 5V DC (USB)
Internet gateway	Auraton Pulse
Radio frequency	865,500 MHz 867,200 MHz 868,150 MHz 868,450 MHz
Radio signal strength	11 dBm
Radio receiver category	2
Operating range	in a typical building, with a standard wall structure - up to 50 m; in open area - up to 150 m

	DN15	DN20	DN25
D1/D2	G 1/2"	G 3/4"	G 1"
d	15	20	20
L1/L2	13	16	18
L3	57	70	76
F	27	32	38
H2	16,5	21,5	21,5
H1	77	81	81
Weight	0,37	0,52	0,52