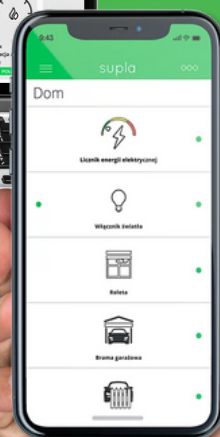


AURATON SMART PRODUCTS NOW COMPATIBLE WITH THE SUPLA APP





SUPLA APP

FREE

An open system that connects devices from different producers. Control via phone or computer!

COMPATIBLE
PRODUCT LINE

AURATON
SMART

What is SUPLA?

SUPLA is an open-source project that allows users to wirelessly control devices from various manufacturers to create a customized smart home system. With the AURATON Box gateway, you can seamlessly integrate your AURATON Smart devices into the SUPLA ecosystem and manage multiple devices from a single SUPLA app.

Why choose SUPLA?

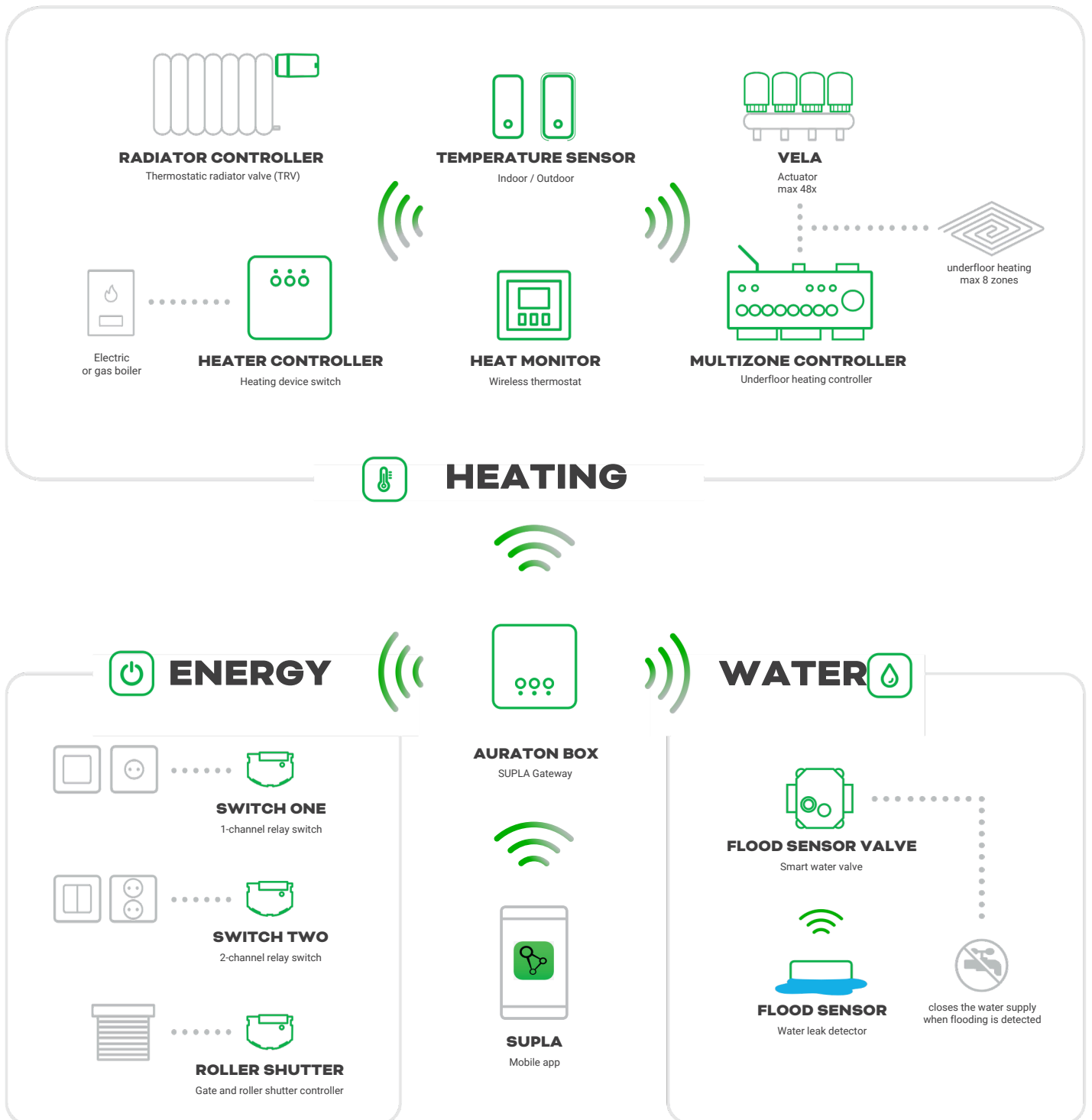
SUPLA is completely free and accessible on your phone, tablet, or computer, providing convenient home management from anywhere. AURATON has opened its system to SUPLA, meeting customer demands and offering greater flexibility in creating a truly smart home. Both SUPLA and AURATON provide full technical support in Polish and prioritize fast response times.

How does AURATON Smart and SUPLA work?

All devices in the AURATON Smart line are compatible with the SUPLA app. Simply add the AURATON Box gateway to your system.

*Please note: The system can only work with one app at a time. Before purchasing, users should decide whether they want to control their home via the SUPLA app (AURATON Box gateway) or the AURATON Smart App (AURATON Pulse hub).

AURATON Smart & SUPLA – infographic



The AURATON Box allows you to easily add new AURATON Smart series devices at any time, expanding your smart home system. With the SUPLA app, every household member can control devices, create scenes and schedules, and remotely manage equipment, giving you full control over your home.

AURATON BOX



Control AURATON Smart devices using the SUPLA system

Control devices in your home via smartphone, tablet, computer, or voice assistants

Create scenes, schedules, monitor operation, and save energy



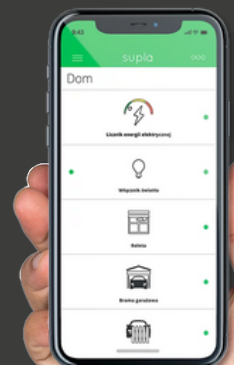
4,8 ★
10,6k reviews

100k +
Downloads
Data from Google Play October 2024

AURATON BOX

SUPLA Gateway

The AURATON Box is a gateway that integrates all devices from the AURATON Smart series with the SUPLA system. It enables remote control and automation of home devices using the SUPLA app or the cloud.supla.org platform. With it, you can manage heating, lighting, and other smart home functions, whether you are at home or away. It is the key element that provides full control over AURATON Smart devices and the convenience of using modern technology in everyday life.





AURATON HEAT MONITOR

A smart thermostat that can be controlled wirelessly and displays the current room temperature. Users can manually adjust the desired temperature.

INDEX (BLACK): AURSMH2011009 | EAN: 5907634851815

INDEX (WHITE): AURSMH2012009 | EAN: 5907634882932



AURATON TEMPERATURE SENSOR

A versatile temperature sensor that can be used both inside and outside.

INDEX (INDOOR): AURSMHCTI0001 | EAN: 5907634882383

INDEX (OUTDOOR): AURSMHCTO0001 | EAN: 5907634882390



AURATON RADIATOR CONTROLLER

Electronic thermostatic radiator valve that automatically controls the temperature of individual radiators for precise heating.

INDEX: AURSMH2312030 | EAN: 5907634851839



AURATON HEATER CONTROLLER

Heating device controller. Controls a furnace, boiler, or any other device. Maximum relay load 16A.

INDEX: AURSMH2211001 | EAN: 5907634851822



AURATON MULTIZONE CONTROLLER

Smart, wireless control unit for underfloor heating, furnace operation, and the central heating pump. Includes four AURATON Vela actuators.

INDEX: AURSMH2571020V | EAN: 5907634882369



AURATON FLOOD SENSOR

A sensor that detects water leaks and can trigger an alarm and shut off the water supply.

INDEX: AURSMW3011009 | EAN: 5907634851846



AURATON FLOOD SENSOR VALVE

Electronic water valve - effective protection against flooding and water control.

Available for threads: 1/2", 3/4", 1".

INDEX (1/2"): AURSMW3121001V | EAN: 5907634851884

INDEX (3/4"): AURSMW3131001V | EAN: 5907634851891

INDEX (1"): AURSMW3111001V | EAN: 5907634851853



AURATON SWITCH ONE

1-channel actuator. Controls any electrical device with a voltage of 12-30V DC and 60-240V AC; maximum channel load 8.6A.

INDEX: AURSME4011010 | EAN: 5907634882543



AURATON SWITCH TWO

2-channel actuator. Controls two electrical devices, each with a voltage of 12-30V DC and 60-240V AC; maximum load per channel 4.3A.

INDEX: AURSME4021010 | EAN: 5907634882550



AURATON ROLLER SHUTTER

Roller shutter controller. For operating electric roller shutters, awnings, roof windows, skylights, and others.

INDEX: AURSME4111010 | EAN: 5907634882611
